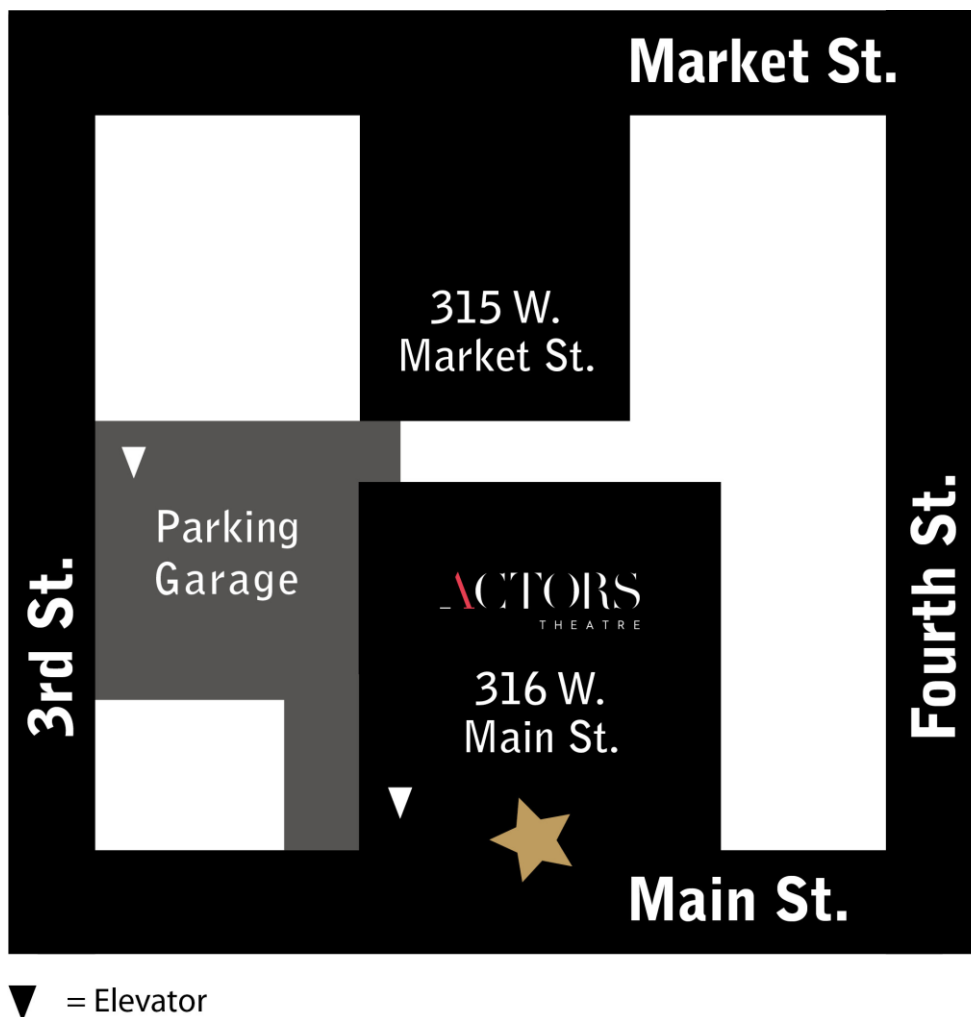
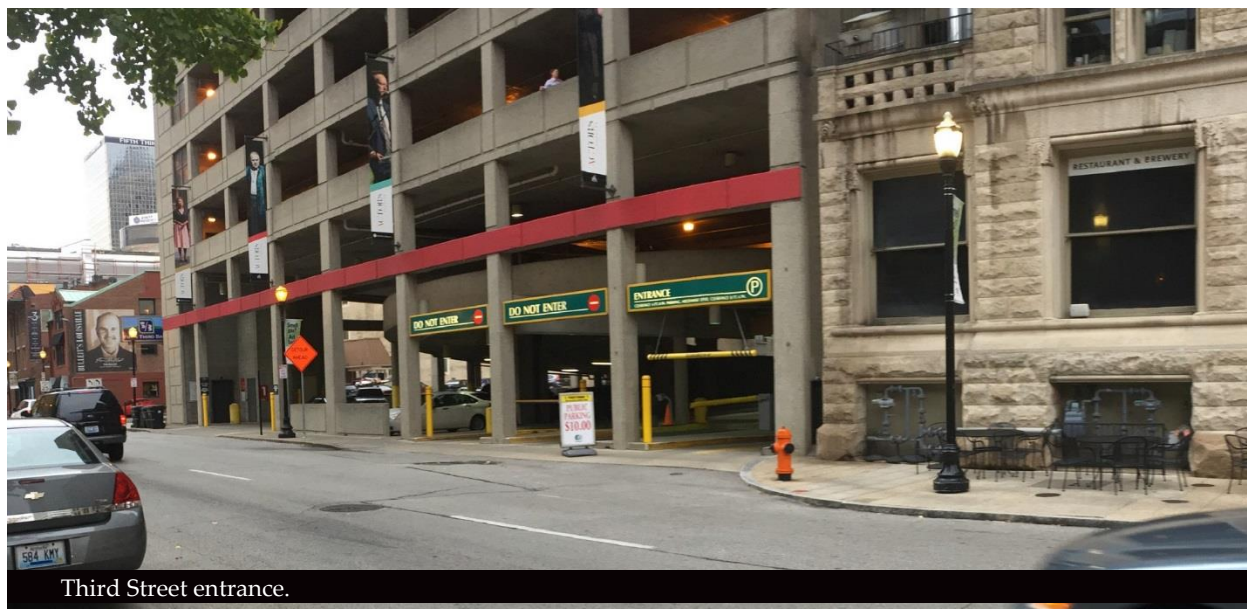


WELCOME TO THE BINGHAM THEATRE AT ACTORS THEATRE OF LOUISVILLE!

In preparation for your visit with us, we would like to guide you through our theatre. If you will travel to the performance by car, you'll want to start from the Actors Theatre parking garage.



Your trip to the theatre begins with a ride up the parking garage! There are two ways to enter the parking garage in your vehicle: both are pictured below.



Third Street entrance.

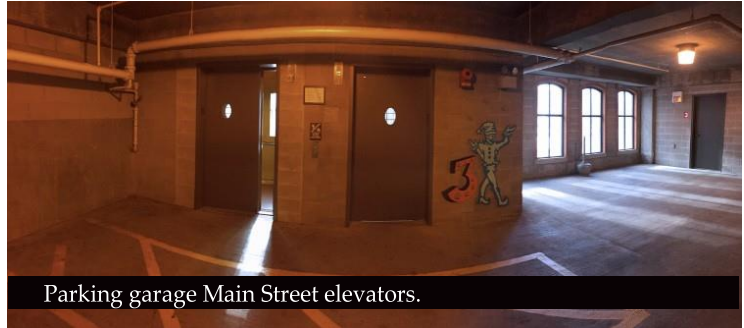


Main Street entrance.

The parking garage has two exits available. There are stairs and elevators on the side facing Third Street and the side facing Main Street. The Main Street elevators will take you directly into the theatre complex.



Parking garage level.



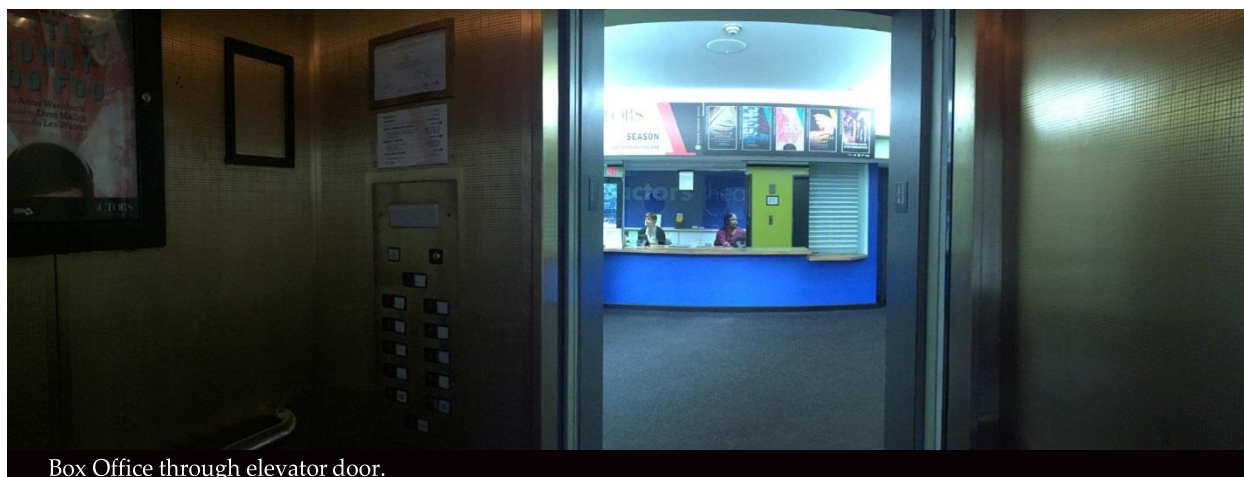
Parking garage Main Street elevators.



Inside Main Street elevator.

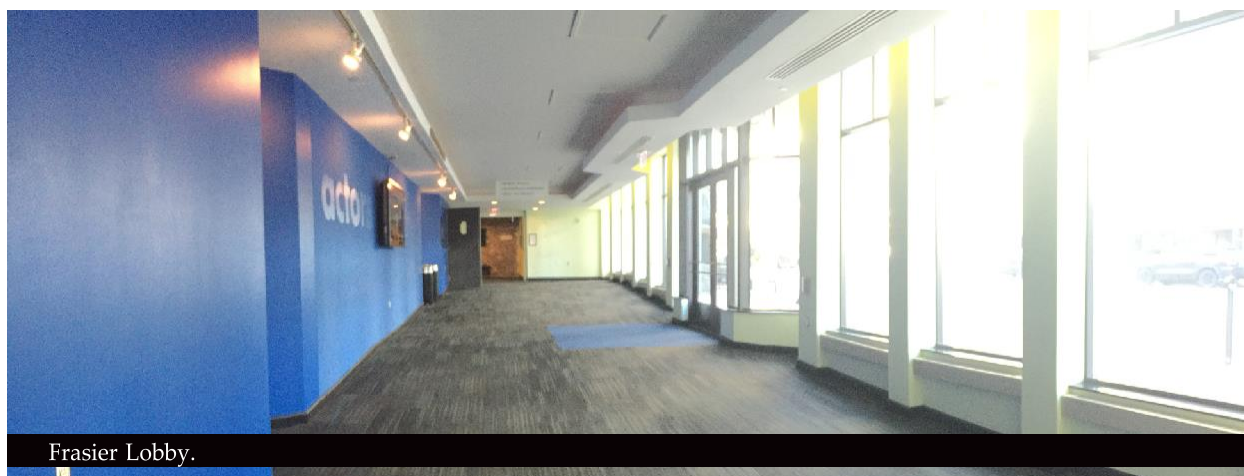
When you enter the elevator, you'll want to press the button for Level 1.** This will take you the Actors Theatre Box Office and the entrance to our theatre building on Main Street! Patron Services Associates will be available at the glass window if you need to pick up your tickets for the show.

**For more information about accessible seating and the Mezzanine please see pages 7, 8 and 9.



Box Office through elevator door.

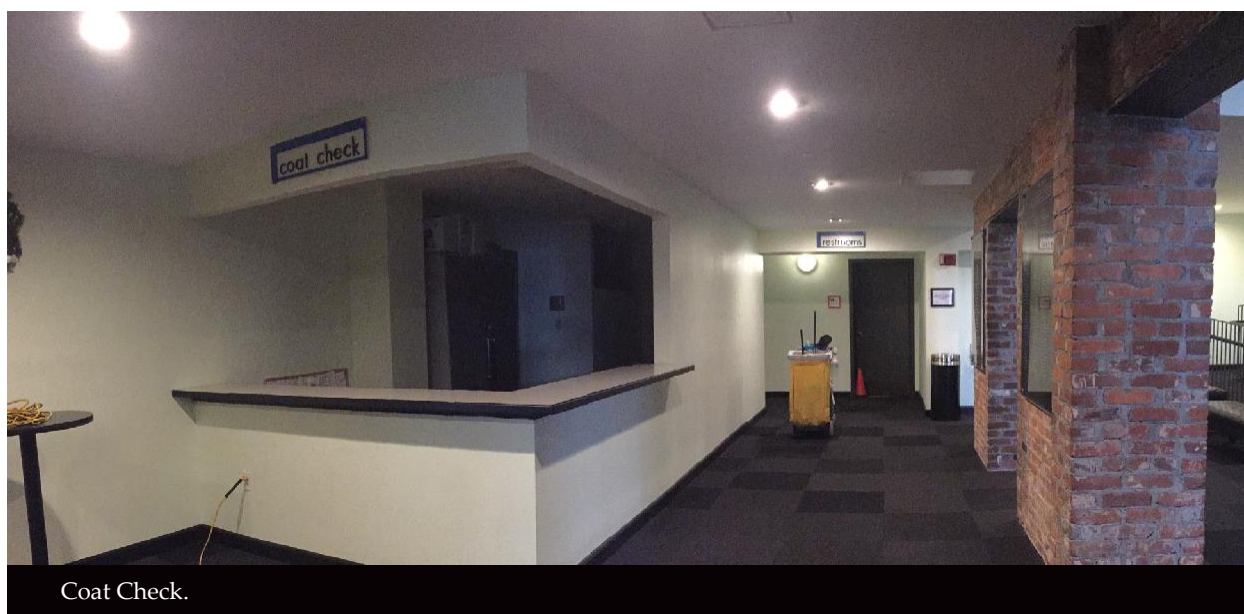
Turn right out of the elevator, and you'll enter the Frazier Lobby. Please be aware that this lobby floor has a slight incline!



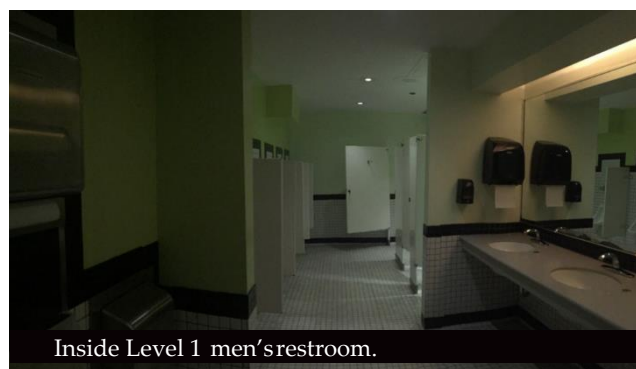
Frazier Lobby.

One of the entrances to the Bingham Theatre is in this lobby. There are two doors to go through, but both will lead you to the same place, and ushers will be there to scan your ticket and show you where your seats are located.

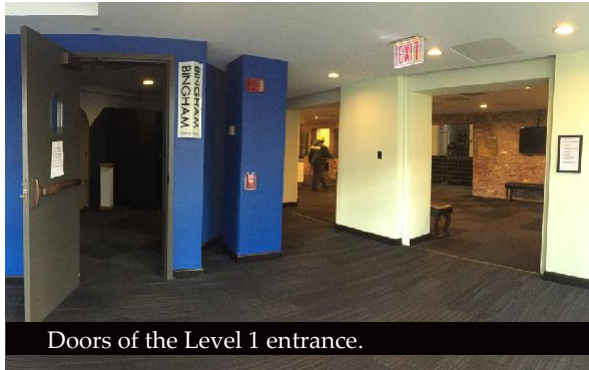
Before entering the Bingham Theatre however, there are several other things to do in the Actors Theatre lobbies. At the end of the Frazier Lobby is the YUM! Lobby. The YUM! Lobby holds Coat Check. Feel free to visit those before your performance begins! You can get assistive listening devices and booster seats at Coat Check.



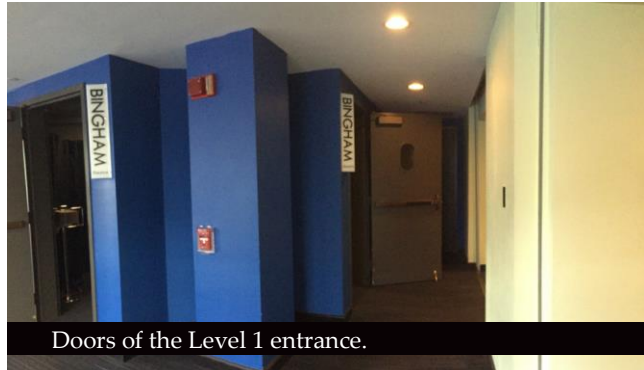
Beside Coat Check are the men's and women's restrooms. There are plenty of stalls in each, including some large enough for you and a companion. Sometimes there is a line to use the restroom, but you never have to wait too long. There are lockable family restrooms located on Level B right across from the elevators. If you need help finding these, ask someone with an Actors Theatre nametag to help you.



Please keep in mind that this Level 1 entrance to the Bingham Theatre will be locked two minutes before the show begins. Not to worry! There is another entrance to the theatre upstairs on the Mezzanine Level.



Doors of the Level 1 entrance.



Doors of the Level 1 entrance.

If your seats are in Sections 6, 7 or 8, follow the signs for the staircase to the upper levels of the theatre.



Stairs in the Bingham to the Mezzanine level.



Stairs in the Bingham to the Mezzanine level.

If you go up the stairs from the restroom, feel free to explore the Sara Shallenberger Brown Lobby! This part of Actors Theatre used to be a bank and is one of the oldest buildings in Louisville. Make sure you look up to see the beautiful ceiling!



Inside the SSB Lobby.

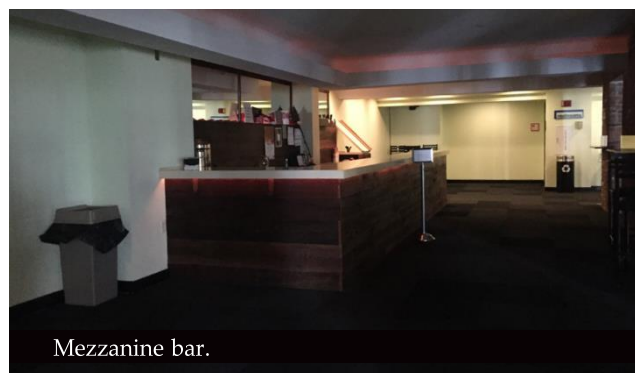


SSB Lobby ceiling.

If you continue up even more stairs to your right, you'll enter the Mezzanine Level. The first thing you'll see is the Mezzanine Bar, where you and your family may purchase beverages.

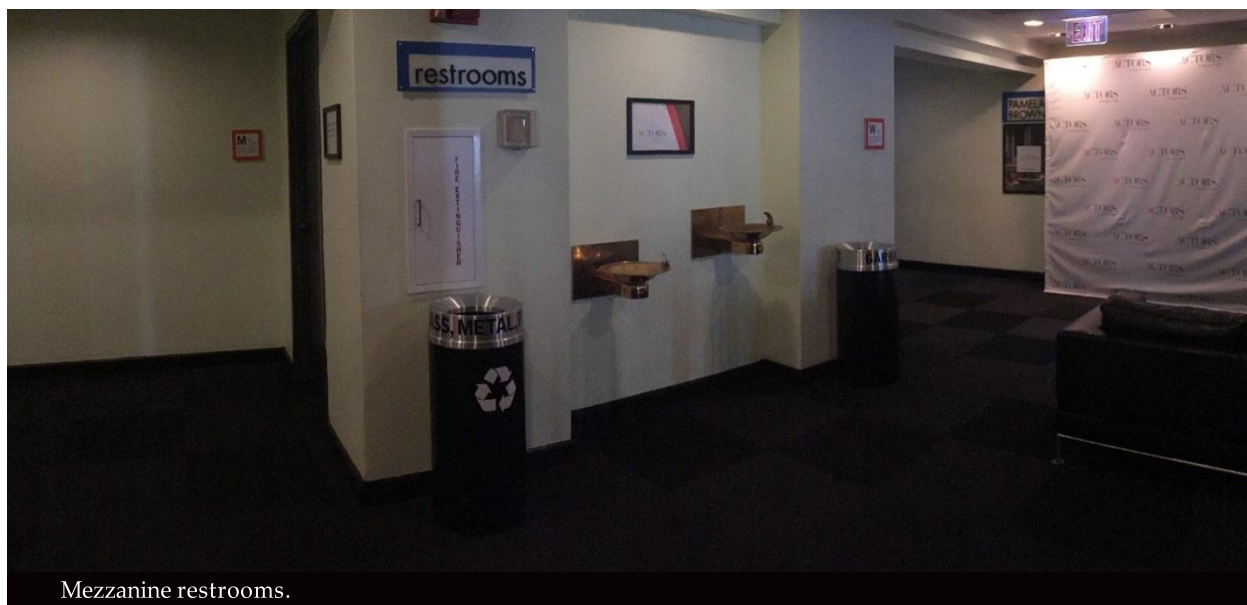


Stairs to the Mezzanine.



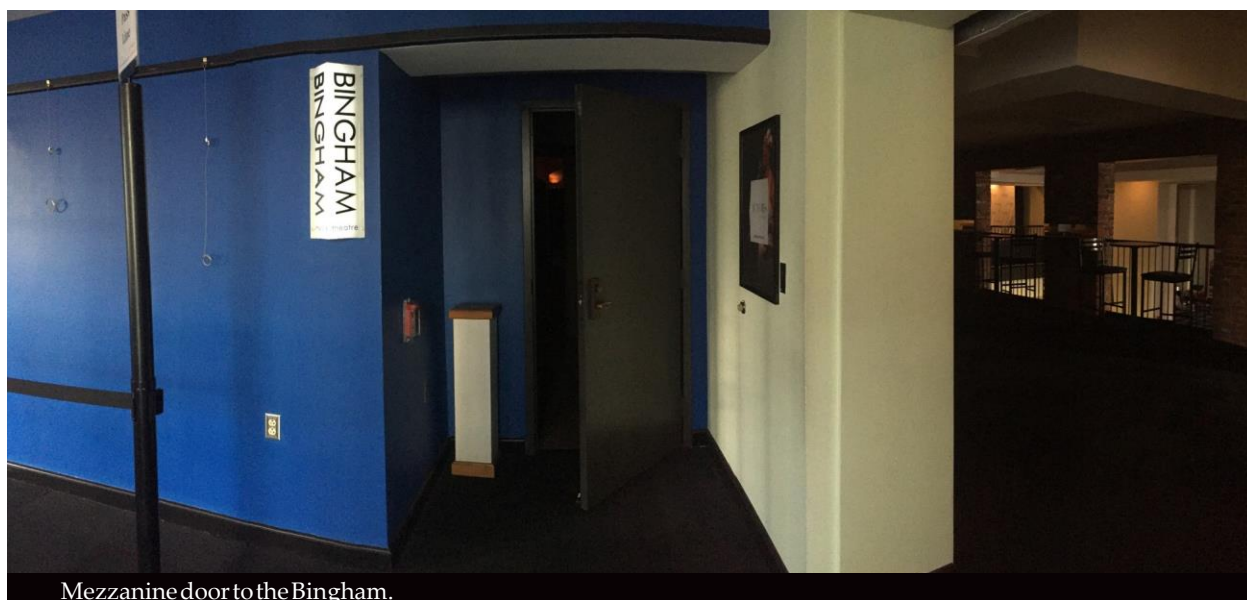
Mezzanine bar.

If you turn right at the top of the stairs and go past the bar, you'll find more restrooms.



Mezzanine restrooms.

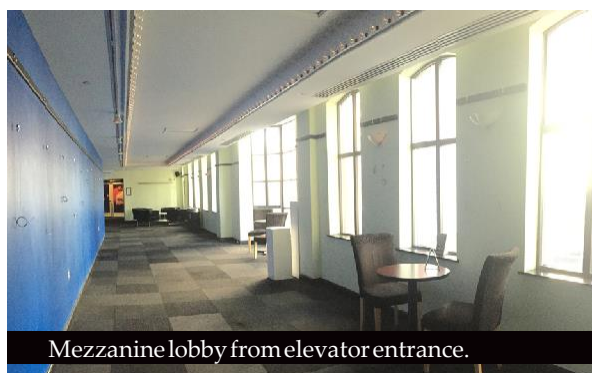
If you instead decide to go straight at the top of the stairs, you will find the Mezzanine entrance to the Bingham Theatre! An usher will be there to show you which direction to go to find your seats. You can get to your seat from either the Frazier Lobby or the Mezzanine Level entrance—so the choice is yours!



Mezzanine door to the Bingham.

If your seats are accessible or if someone in your party cannot climb stairs, you may take the elevator directly to the Mezzanine Level by pressing the “M” button.

If you enter the Mezzanine Level from the elevator, take a right out of the elevator bay. This will lead you to our Mezzanine Lobby. You can get a beautiful view of Main Street! There will be art on the walls that you can look at before entering the theatre.



Mezzanine lobby from elevator entrance.



Windows facing Main Street in the Mezzanine lobby.

Go straight to the end of the lobby and you will find the Mezzanine Level entrance to the Bingham Theatre! An usher will be right outside the doorway to scan your ticket and more ushers will be inside the theatre to help guide you to your seat.

When you see a show in the Bingham Theatre, you're seeing it "in the round." This means that the stage is located in the middle of all the seats, instead of in front of all the seats.



If you need to exit the theatre during the show, that's perfectly fine! Please always exit up the stairs and through the Mezzanine Level, as the Level 1 doors to the lobby will be locked throughout the show.

We hope you enjoy your visit at Actors Theatre of Louisville!