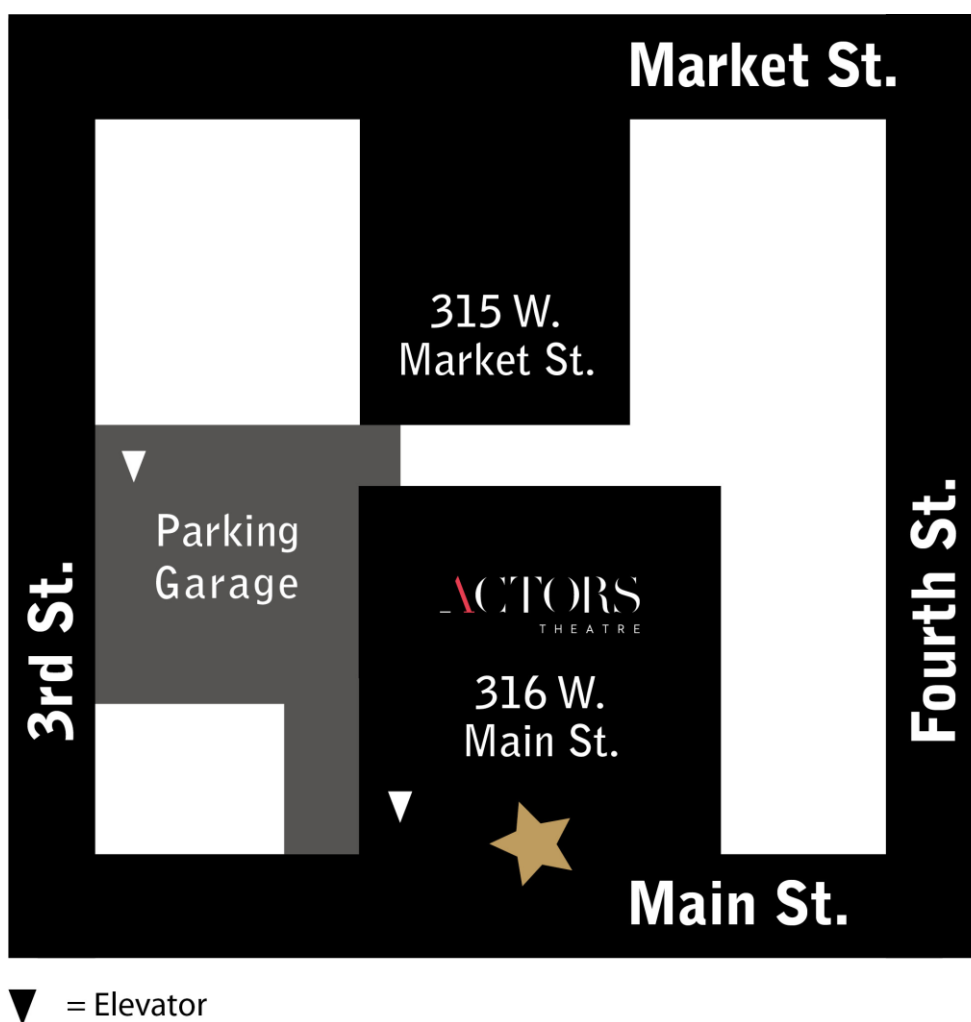
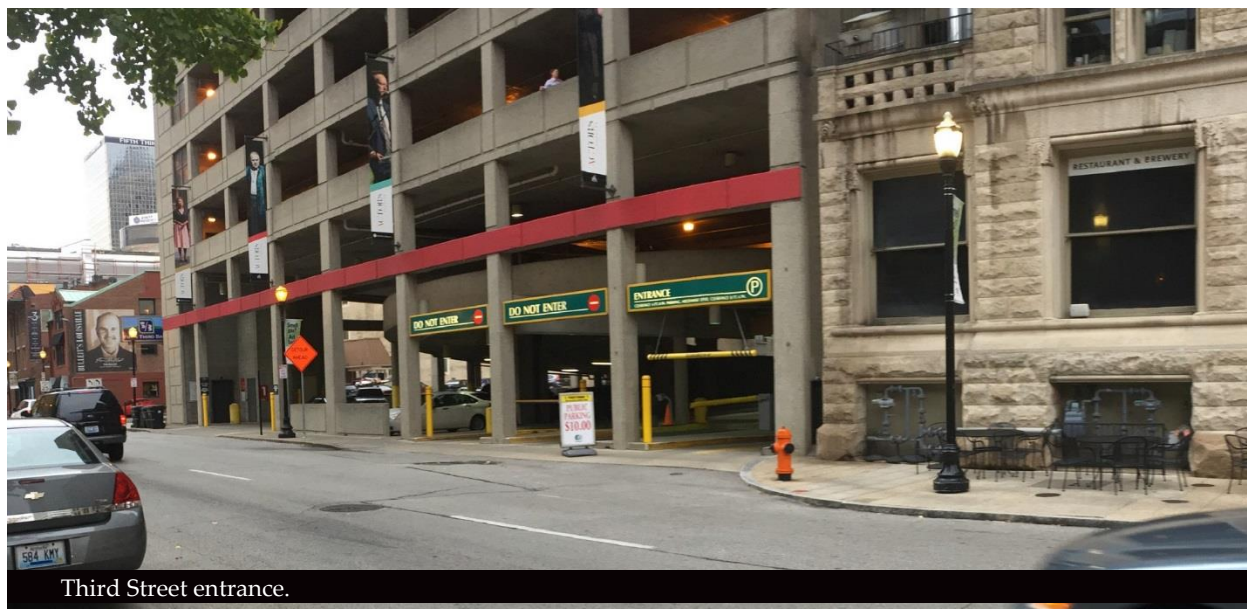


# WELCOME TO THE VICTOR JORY THEATRE AT ACTORSTHEATRE OF LOUISVILLE!

In preparation for your visit with us, we would like to guide you through our theatre. If you will travel to the performance by car, you'll want to start from the Actors Theatre parking garage.



Your trip to the theatre begins with a ride up the parking garage! There are two ways to enter the parking garage in your vehicle: both are pictured below.



Third Street entrance.

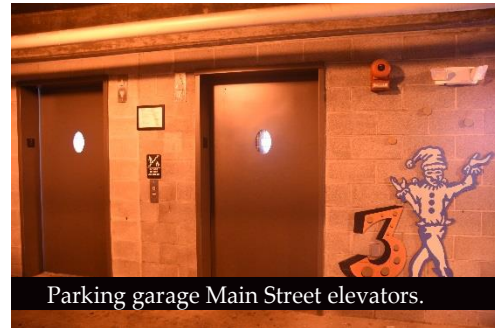


Main Street entrance.

The parking garage has two exits available. There are stairs and elevators on the side facing Third Street and the side facing Main Street. The Main Street elevators will take you directly into the theatre complex.



Parking garage level.



Parking garage Main Street elevators.



Inside Main Street elevator.



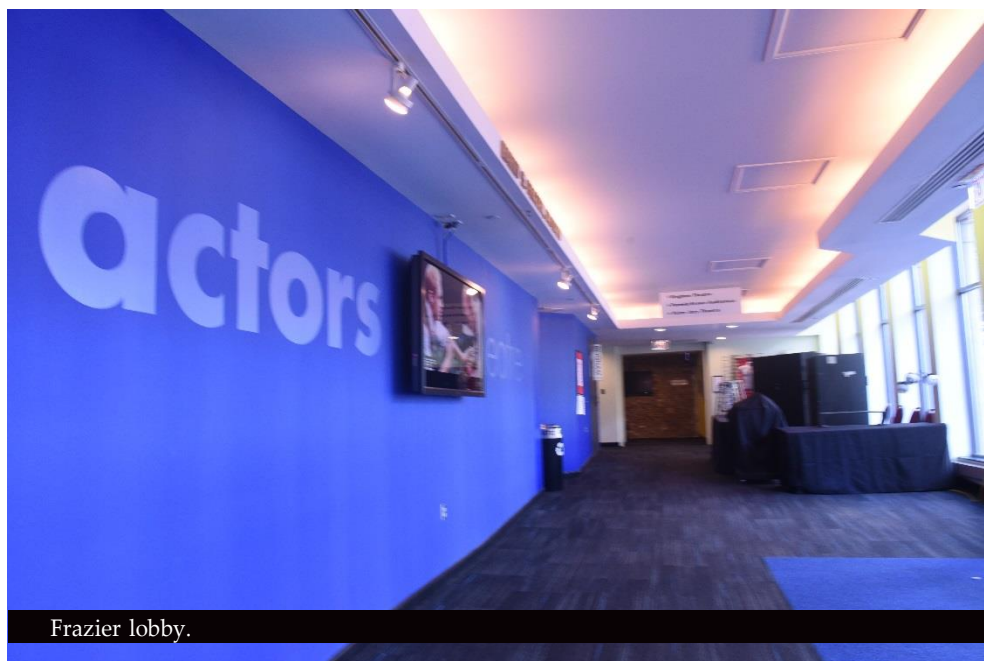
When you enter the elevator, you'll want to press the button for Level 1.\*\* This will take you the Actors Theatre Box Office and the entrance to our theatre building on Main Street! Patron Services Associates will be available at the glass window if you need to pick up your tickets for the show.

\*\*For more information about accessible seating and the Mezzanine please see page 9.



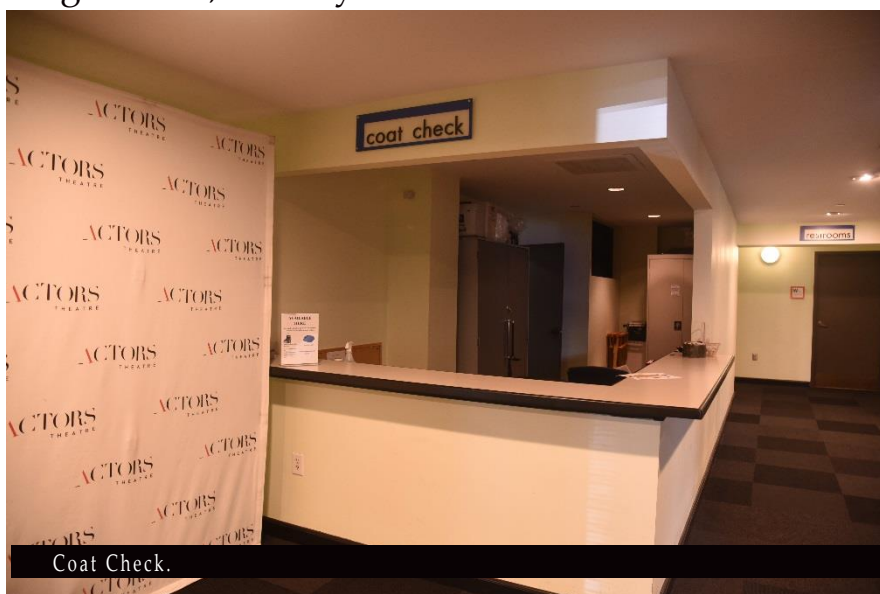
Box Office through elevator door.

Turn right out of the elevator, and you'll enter the Frazier Lobby. Please be aware that this lobby floor has a slight incline!



Frazier lobby.

Before entering the Victor Jory Theatre however, there are several other things to do in the Actors Theatre lobbies on Level 1. At the end of the Frazier Lobby is the YUM! Lobby. The YUM! Lobby holds Coat Check. Feel free to visit those before your performance begins! You can get assistive listening devices, sensory kits and booster seats at Coat Check.



Beside Coat Check are the men's and women's restrooms on Level 1. There are plenty of stalls in each, including some large enough for you and a companion. Sometimes there is a line to use the restroom, but you never have to wait too long. There are lockable family and gender neutral restrooms located on Level B right across from the elevators. If you need help finding these, ask someone with an Actors Theatre nametag to help you.



If you go up the stairs from the restroom, feel free to explore the Sara Shallenberger Brown Lobby! This part of Actors Theatre used to be a bank and is one of the oldest buildings in Louisville. Make sure you look up to see the beautiful ceiling!



SSB Lobby ceiling.

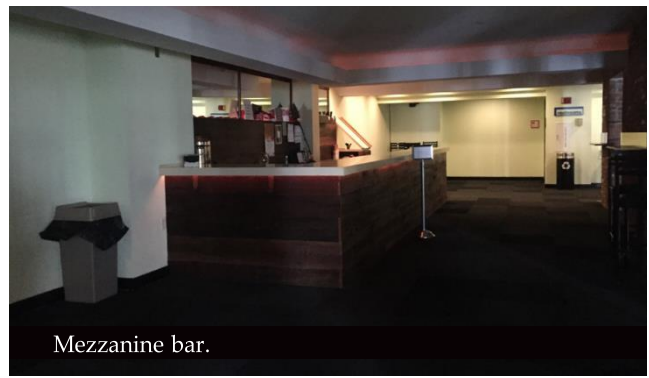


SSB Lobby ceiling.

If you continue up even more stairs to your right, you'll enter the Mezzanine Level. The first thing you'll see is the Mezzanine Bar, where you may purchase beverages.



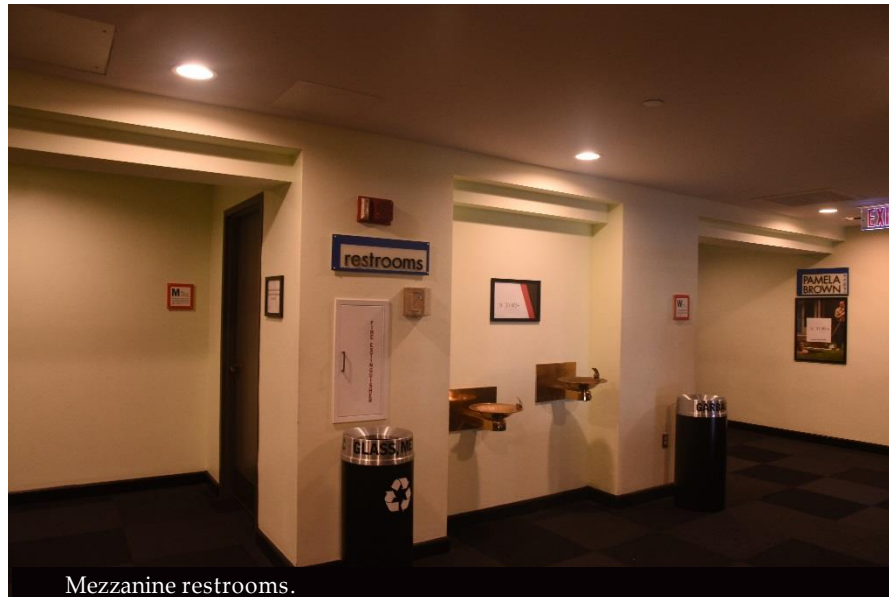
Stairs to the Mezzanine



Mezzanine bar.

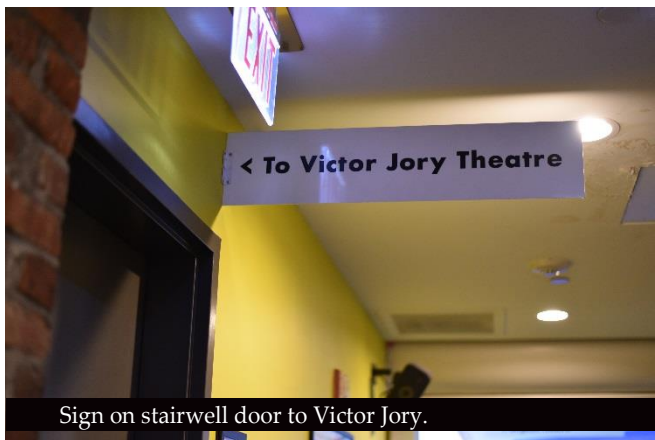


If you turn right at the top of the stairs and go past the bar, you'll find more restrooms. Please note that there are no restrooms on the level of the Victor Jory Theatre.



Mezzanine restrooms.

If you instead decide to go straight at the top of the stairs, you will find another stairwell directing you to the Victor Jory Theatre. If you enter here and go up one flight of stairs, you will see a door into the Lobby.



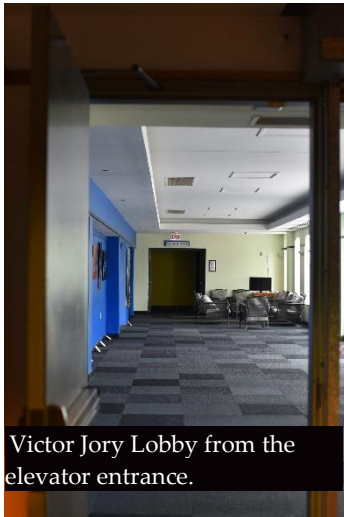
Sign on stairwell door to Victor Jory.



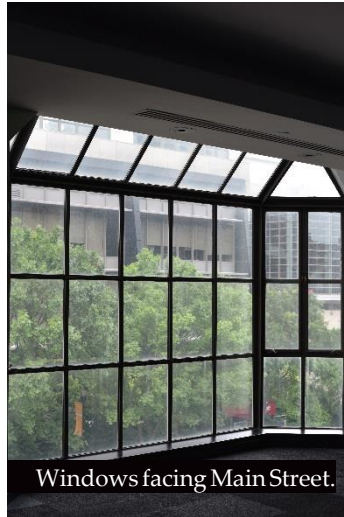
Door to Victor Jory lobby.

If you would rather avoid the stairs, another way to reach the Victor Jory Theatre is to take the elevator and press the button for 2.

If you enter Level 2 from the elevator, take a right out of the elevator bay. This will lead you to our Victor Jory Lobby. You can get a beautiful view of Main Street! There will be art on the walls that you can look at before entering the theatre.



Victor Jory Lobby from the elevator entrance.



Windows facing Main Street.

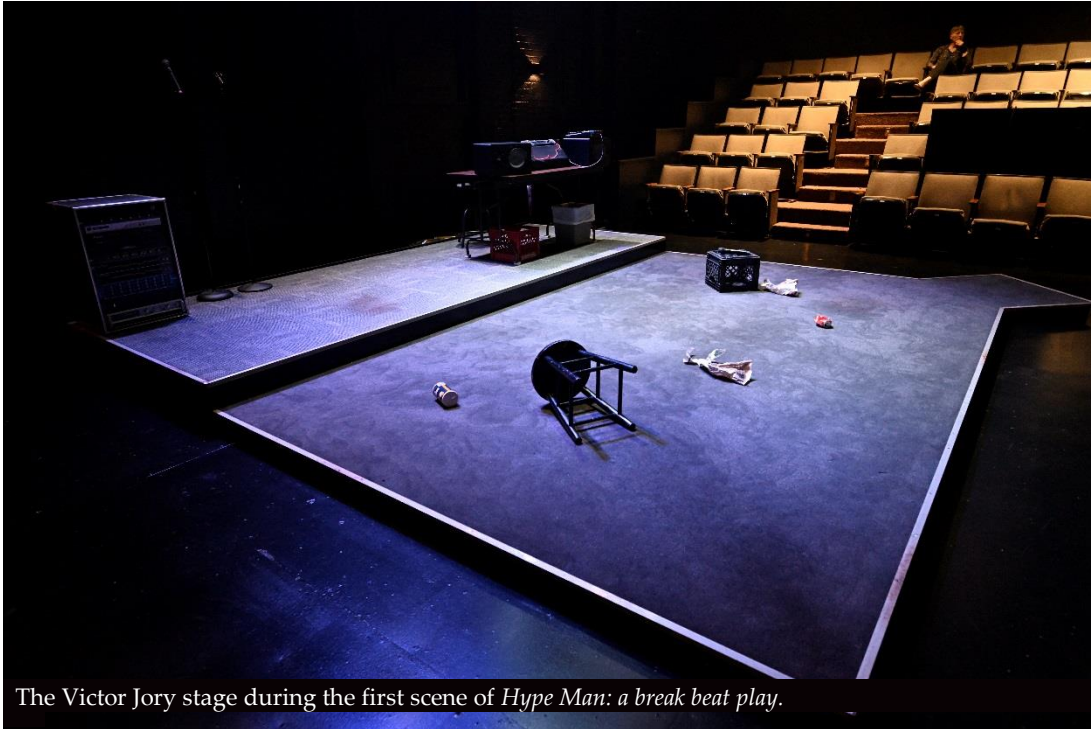


Artwork on the walls of the Victor Jory lobby.

Go straight to the end of the lobby and through the double doors and you will find the entrance to the Victor Jory Theatre. An usher will be right outside the theatre to scan your ticket, and more ushers will be inside the theatre to help guide you to your seat.



When you see a show in the Victor Jory Theatre, you're seeing it in a "thrust" arrangement. This means that there is seating on three sides of the stage.



The Victor Jory stage during the first scene of *Hype Man: a break beat play*.

If you need to exit the theatre during the show, reentry may not be possible for the safety and enjoyment of everyone.

**We hope you enjoy your visit here at  
Actors Theatre of Louisville!**