

WELCOME

We are so glad you will be joining us in the Bingham Theatre! As a few things have changed, we would like to guide you through our theater in preparation for your visit.

To care for yourself and protect others, please **DO NOT ATTEND** if you are experiencing cold or flu symptoms. If you are unable to attend a performance due to illness, we will be happy to reseat you at a future performance.

If you plan on driving to the performance, you can park at the Actors Theatre of Louisville parking garage at 130 S. 3rd St. Parking is \$10, and you can pay with cash, a credit or a debit card.

If you plan on taking public transportation or utilizing a ride-share option, set your destination to 316 W. Main St., Louisville, KY 40202.

For a full visual reference of the facility from the entrance into the theatre, check out our [Threshold 360 Virtual Tour!](#)

FROM PARKING TO THE ELEVATORS

The Parking Garage has seven levels with ample parking options available. Designated Accessible parking spots are located on the Mezzanine Level of the Parking Garage closest to the Main Street elevators.



THIRD STREET PARKING ENTRANCE.

The Parking Garage has two ways to enter the theater:

1. Stairs and elevators near Third Street.
2. Stairs and elevators near Main Street.

Actors Theatre recommends the Main Street elevators for the most direct route into the theater complex.



PARKING GARAGE MAIN STREET ELEVATORS.

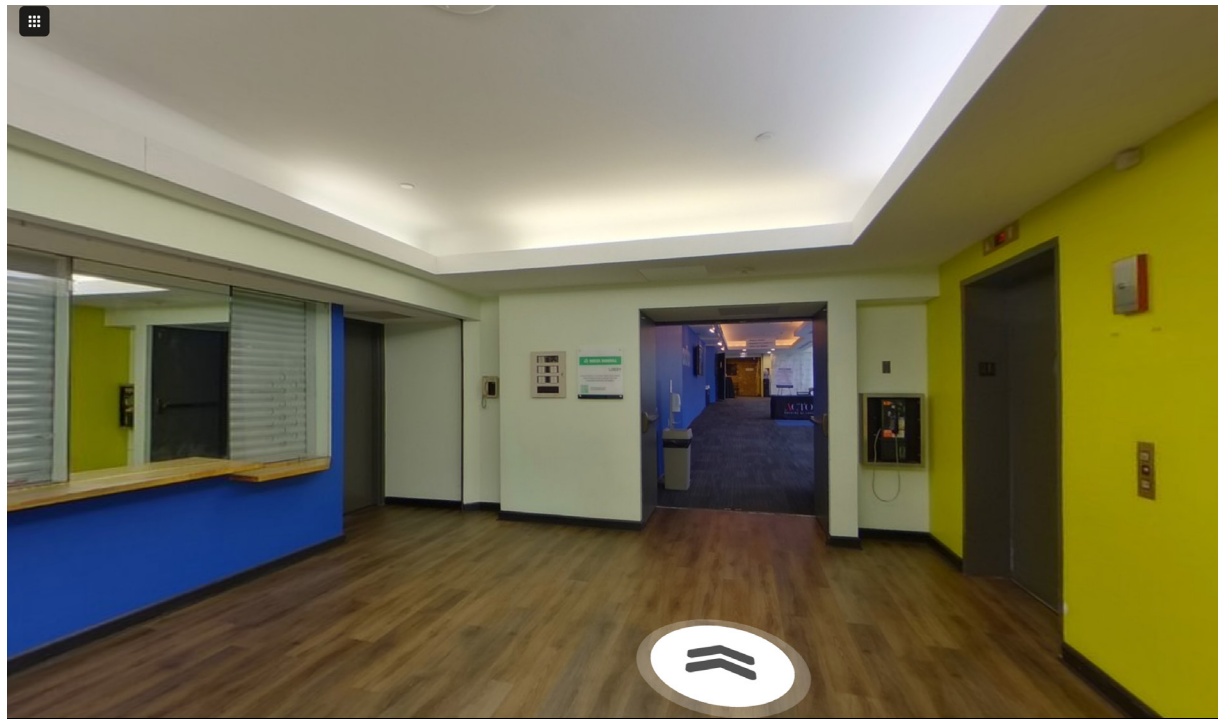
The Bingham Theater can be reached through the Mezzanine Level or Level 1.

Wheelchair accessible seating is available on the Mezzanine. The Bingham Theater seats are arranged in stadium-style seating. For those who would like to arrive at your seats navigating the least number of stairs, we recommend the following: If your seats are in row aa, bb or cc, enter on Level 1. If your seats are located in rows gg, ff or ee, we recommend using the entrance located on the Mezzanine.

ENTERING ACTORS THEATRE OF LOUISVILLE

As you exit the Main Street elevator, turn to your right where you will enter the lobbies of Actors Theatre.

NOTE: Please be aware that the lobby on Level 1 has a slight incline.



ENTRANCE TO THE LEVEL 1 LOBBY FROM ELEVATOR.

NOTE: LEVEL ONE ACCESS INTO ACTORS THEATRE IS ONLY AVAILABLE THROUGH THE PARKING GARAGE DOOR, NOT FROM THE MAIN STREET SIDEWALK ENTRANCE.

ACCESSIBILITY

Assisted Listening Devices, sensory toys, and booster seats will be available at the Radical Hospitality Hub.

Actors Theatre offers captioned performances on the first Sunday and second Thursday of our performance runs. Captions can be used on your personal device or one provided by Actors Theatre.

Please return your Assisted Listening Devices to the Radical Hospitality Hub.



RADICAL HOSPITALITY HUB ON LEVEL 1.

FOOD & BEVERAGE

Please join us for a drink outside of the Pamela Brown Auditorium in the Sara Shallenberger Brown Lobby! Our bar features wine, beer, canned cocktails, soda, and non-alcoholic beverages. We invite you to enjoy drinks in the theater and the lobby.



BAR IN THE SARA SHALLENBERGER BROWN LOBBY.

RESTROOMS

Actors Theatre of Louisville is committed to providing safe and accessible restrooms for people of all genders.

There are two sets of gender-inclusive restroom facilities on Level 1 with private stalls in each facility. On the Mezzanine Level, there is a restroom designated M with private stalls and urinals, and a restroom designated W with private stalls. All guests are welcome to use the facility of their choice.

If you require access to a more private restroom, please speak to a member of the Radical Hospitality Team and they can escort you to Level B.

If you need assistance or have a question, ask someone with an Actors Theatre lanyard to help you.



RESTROOMS LOCATED ON LEVEL 1.



RESTROOMS WITH STALLS.



RESTROOMS WITH STALLS AND URINALS.

READY FOR THE SHOW

When you are ready to take your seat, the entrance to the Bingham Theater is adjacent to the Ticket Scanning Stations on both levels. Seats will be assigned, so be sure to check your mobile ticket for which section to go to.

Wheelchair accessible seating is available on the Mezzanine Level. Feel free to ask a staff member if you need support finding your way into the theater or to your seat.

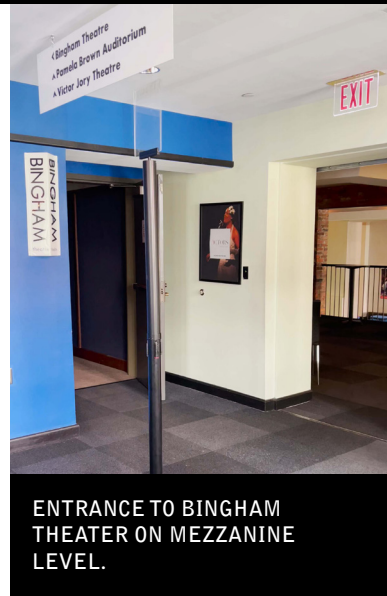


TOP VIEW OF BINGHAM THEATER SEATS.

LATE ARRIVALS

If you arrive at the theater after the performance start time, please proceed to the Mezzanine Level where a staff member will assist you.

PLEASE NOTE: For your safety and the safety of the performers, anyone who needs to exit or enter the theater during the performance **MUST** go through the exits at the top of the theater on the Mezzanine Level, which may involve navigating stairs. The performers will be using entrances on Level 1 during the performance.

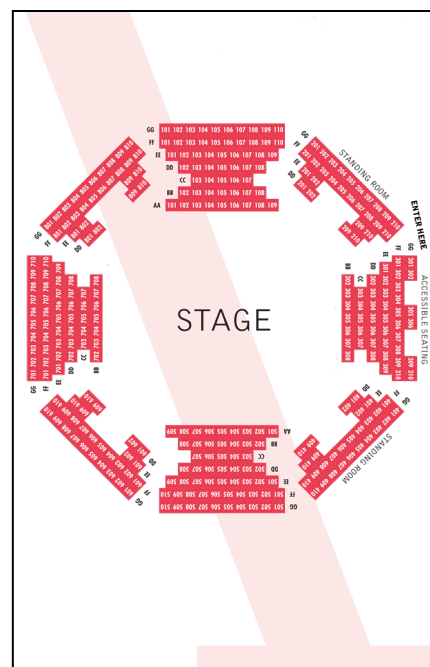


ENTRANCE TO BINGHAM THEATER ON MEZZANINE LEVEL.

ABOUT THE BINGHAM THEATER

The Bingham Theater is designed "In-the-Round" which means the stage is surrounded by the audience on all sides. "In-the-Round" seating will be utilized according to the artistic needs of each production.

The stairs inside the Bingham are at a steepness of 7 inches high. If you enter from Level 1, you will need to go up stairs to get to seats. If you enter from the Mezzanine, you will need to go down stairs to get to seats.



For a full visual reference of the facility from the entrance into the theater, check out our [Threshold 360 Virtual Tour!](#)

WE HOPE YOU ENJOY YOUR VISIT TO ACTORS THEATRE OF LOUISVILLE!